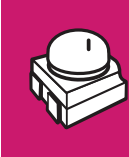


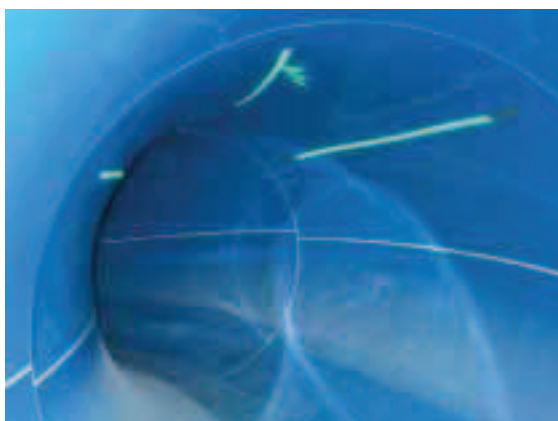
Product reference	Product number	COLOR		K ¹⁾	λ ¹⁾		V	A ¹⁾	W ¹⁾	
LINEARlight Flex®										
LM10A-W1-865	4050300873817	white	600	6500	–	120	24	2.4	57.6	8
LM10A-W2-865	4050300887265	white	600	6500	–	120	24	3.6	86.4	8
LM10A-W1-854	4050300817170	white	600	5400	–	120	24	2.4	57.6	8
LM10A-W2-854	4050300887289	white	600	5400	–	120	24	3.6	86.4	8
LM10A-W1-847	4050300817156	white	600	4700	–	120	24	2.4	57.6	8
LM10A-W2-847	4008321040145	white	600	4700	–	120	24	3.6	86.4	8
LM10A-A1	4008321040060	red	600	–	617	120	24	3.0	72.0	8
LM10A-Y1	4050300946030	yellow	600	–	587	120	24	3.0	72.0	8
LM10A-T2	4008321132628	green	600	–	525	120	24	3.0	72.0	8
LM10A-B1	4050300945491	blue	600	–	470	120	24	3.0	72.0	8
LM11A-W1-865	4050300873879	white	300	6500	–	120	10	3.0	30.0	8
LM11A-W1-854	4050300817217	white	300	5400	–	120	10	3.0	30.0	8
LM11A-W1-847	4050300817194	white	300	4700	–	120	10	3.0	30.0	8
LM11A-A	4050300938554	red	300	–	615	120	10	1.5	15.0	8
LM11A-Y1	4050300946016	yellow	300	–	587	120	10	2.25	22.5	8
LM11A-T	4050300938578	green	300	–	528	120	10	3.0	30.0	8
LM11A-B	4050300938561	blue	300	–	470	120	10	3.0	30.0	8

Other data (valid for all types):
 Photometric data: current values as per data sheet
 Operating temperature: –30 to +75 °C, 85 °C at the Tc point depending on colour



LINEARlight Flex®

LINEARlight Flex® is an LED module on a flexible pc board with light emitted either at the top (LM10A) or at the side (LM11A). The modules can be used for long illuminated lines, for backlighting complex structures and for illuminated signs.



- LINEARlight Flex® is perfectly matched to OSRAM OPTOTRONIC® electronic control gear
- Dimmable by pulse width modulation (PWM) with OT DIM electronic control gear
- Dimensions (L x W x H)
- LM10A: 8400 mm x 10 mm x 3 mm and for
- LM11A: 4200 mm x 10 mm x 4.2 mm
- Can be divided into units or their multiples with no loss of function in the parts. The smallest units are 10 LEDs (140 mm x 10 mm) for LM10A and 4 LEDs (56 mm x 10 mm) for LM11A
- Flexible installation on curved surfaces is possible. Minimum bending radius 2 cm
- The double-sided adhesive tape on the back of the module makes mounting even easier
- Wide beam angle: 120°

Current data sheets, product references and product numbers can be found on the internet at www.osram.com

1) All the technical parameters apply to the entire module. In view of the complex manufacturing process for light emitting diodes, the typical values given above for the technical LED parameters are merely statistical values

that do not necessarily correspond to the actual technical parameters of an individual product; individual products may vary from the typical values.